

Management of Lumbar Radiculopathy

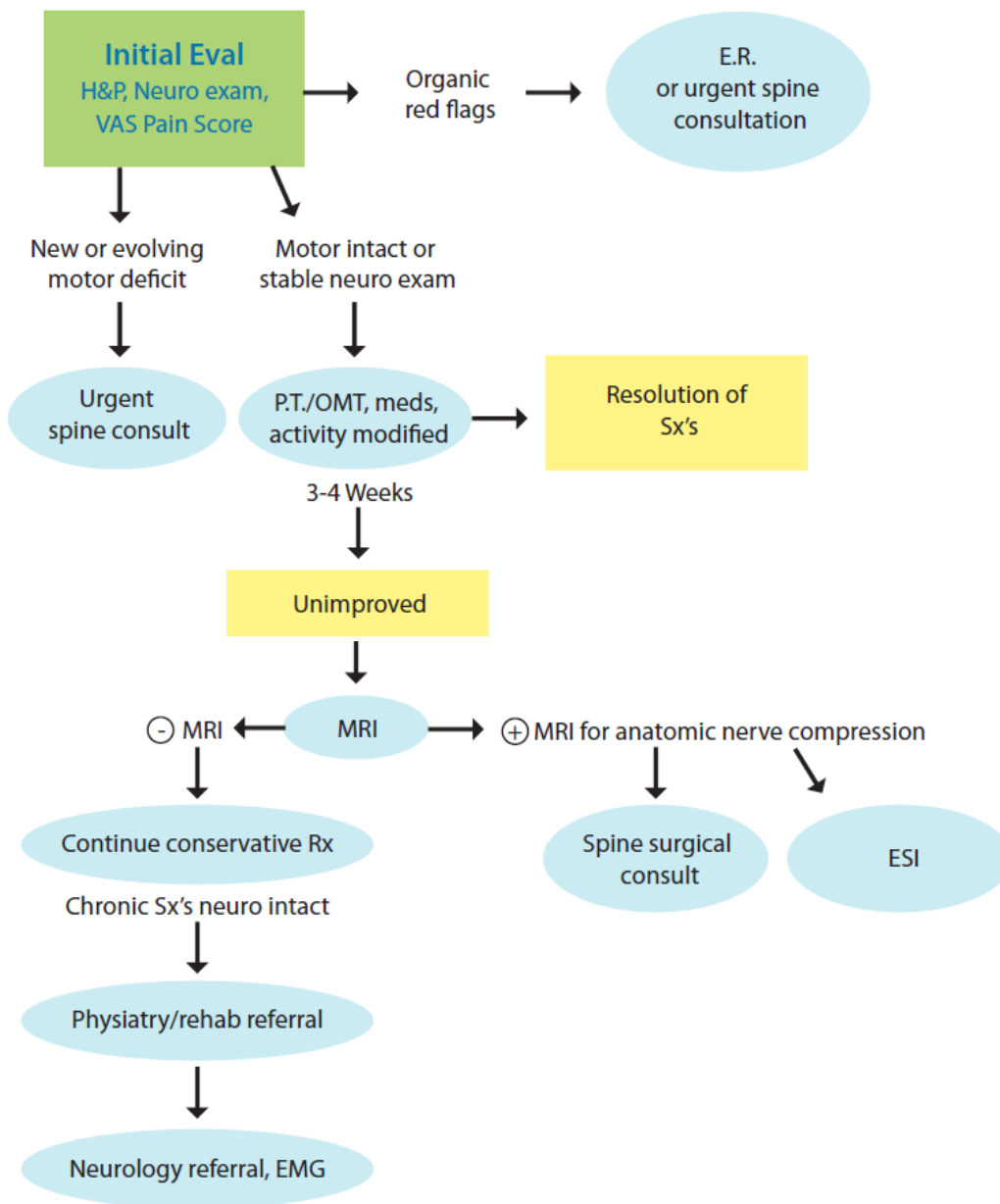
Author: Dr. David Urquia

2/2014

Reviewed: 7/2016

Lumbar Radiculopathy

Acute (<3 weeks) • **Sub-Acute** (3-12 weeks)



Management of Lumbar Radiculopathy

Author: Dr. David Urquia

2/2014

Reviewed: 7/2016

Lumbar Radiculopathy

Comments:

1. ESI attempt is not a mandatory prerequisite before surgical referral.
2. Recommend short duration narcotics (<4 weeks) even if no improvement in pain SX's.
3. Algorithm for cervical Radiculopathy the same, except be aware that neuro deficit at cord level can include long tract signs, sensory SX's, even in absence of pain.
4. Much higher risk/reward ratio for cervical injection procedure.



Practice Guidelines and Standard Processes Disclaimer

To promote the provision of efficient and effective healthcare services, Kennebec Region Health Alliance helps develop and disseminates practice guidelines for use by its member practices. Such guidelines are based upon various sources that KRHA believes to be reliable, which may include but is not limited to, guidelines from widely recognized professional societies, boards and colleges such as the American Medical Association (AMA). Practice guidelines are reviewed at least every two years and updated as necessary to reflect changes in medical practice.

These practice guidelines are not meant to express standards of care and should not be regarded as evidence of such standards. These Guidelines describe criteria for general operating practice and procedure and are for voluntary use. Guidelines are not a substitute for a physician's or healthcare professional's independent judgment.

Information on this website should not be relied on as an alternative to medical advice from a physician or other healthcare professional. If there are specific questions on any medical matter, a physician or healthcare professional should be consulted.